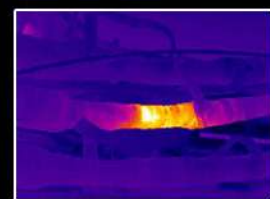
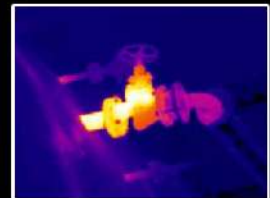
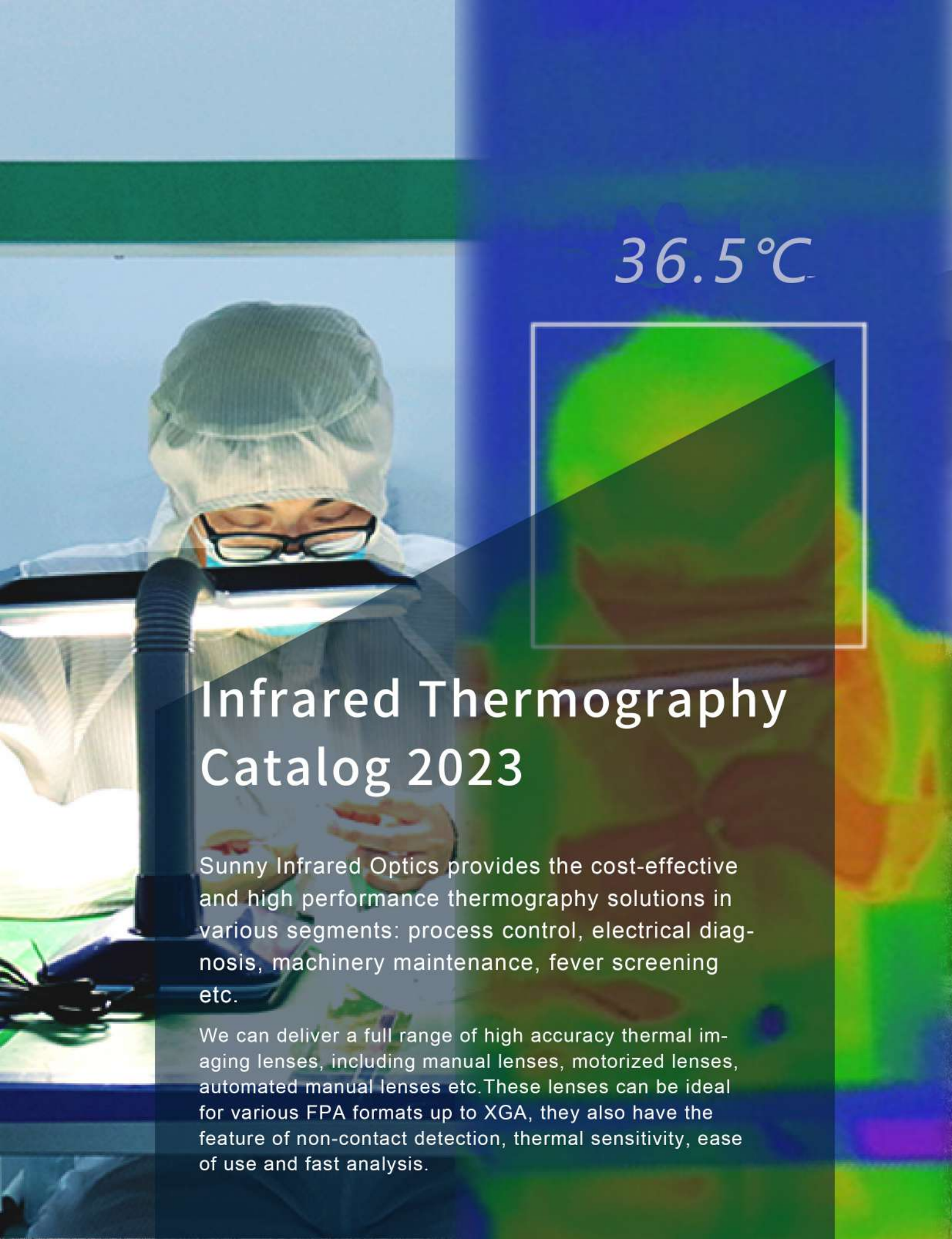


THERMOGRAPHY CATALOG 2023

*Ideal for process control, electrical
diagnosis, machinery maintenance,
fever Screening etc*



SUNNY
INFRARED OPTICS



36.5°C

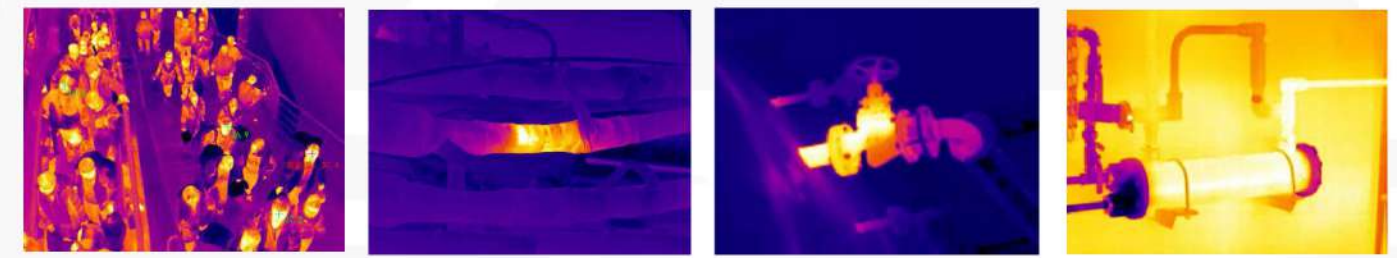
Infrared Thermography Catalog 2023

Sunny Infrared Optics provides the cost-effective and high performance thermography solutions in various segments: process control, electrical diagnosis, machinery maintenance, fever screening etc.

We can deliver a full range of high accuracy thermal imaging lenses, including manual lenses, motorized lenses, automated manual lenses etc. These lenses can be ideal for various FPA formats up to XGA, they also have the feature of non-contact detection, thermal sensitivity, ease of use and fast analysis.



- **High aiming accuracy.**
- **Multiple objects can be detected simultaneously.**
- **Take temperature measurements from a safe distance.**
- **Provide customized solutions for infrared thermography lens.**



NO.	f (mm)	F#	Sensor	Transmission @8~12μm	Fov(°)	Focus	M.B.F.L (mm)	Mount	Dimensions (mm)	Sealing	Front Lens Coating
VGA 12μm Series											
1	13.5	1.0	640*480 12μm	≥90.4%	32.0(H)×24.2(V)	Athermalized	7.5	M25×0.5	L14.05;Φ26	IP 54	AR
2	18	1.0	640*480 12μm	≥89.9%	24.0(H)×18.1(V)	Athermalized	5.13	M24×0.5	L22.85;Φ27.6	IP 67	AR
QQVGA 17μm Series											
3	3.1	1.1	160*120 17μm	≥93.3%	50.0(H)×37.2(V)	Athermalized	5.3	M17×0.5	L10.7;Φ22	IP 67	HD
4	3.2	1.1	256*192 12μm 160*120 12μm	≥94.6%	56.0 (H) x42.2 (V); 35.3(H) x26.7(V)	Athermalized	2.575	M9×0.25	L31;Φ9	IP 67	AR
5	6.2	1.1	160*120 17μm	≥93.2%	25.0(H)×18.7(V)	Athermalized	5.3	M17×0.5	L11.9;Φ22	IP 67	HD
QVGA 17μm Series											
6	7.5	1.0	384*288 17μm	≥89.0%	51.3(H)×37.9(V)	Athermalized	9.5	M34×0.5	L42;Φ34.9	IP 67	AR
7	9.7	1.0	384*288 17μm	≥88.6%	37.5(H)×28.5(V)	Athermalized	7	M25×0.5	L19;Φ34	IP 67	HD
8	13	1.0	384*288 17μm	≥90.0%	28.4(H)×21.4(V)	Athermalized	6.1	M17×0.75	L14.9;Φ20	IP 54	HD
9	15	1.0	384*288 17μm	≥89.0%	24.3(H)×18.4(V)	Athermalized	8.5	M34×0.75	L18.5;Φ34	IP 67	HD
VGA 17μm Series											
11	7.5	1.0	640*480 17μm	≥84.0%	91.2(H)×65.4(V)	Athermalized	9.5	M34×0.5	L42;Φ34.9	IP 67	DLC
12	13	1.0	640*480 17μm	≥83.1%	48.9(H)×36.3(V)	Athermalized	9.5	M34×0.5	L26;Φ34.9	IP 67	DLC
13	19	1.0	640*480 17μm	≥86.4%	32.1(H)×24.3(V)	Athermalized	9	M30×0.75	L22;Φ32	IP 67	HD

Contact us for more IR solutions.